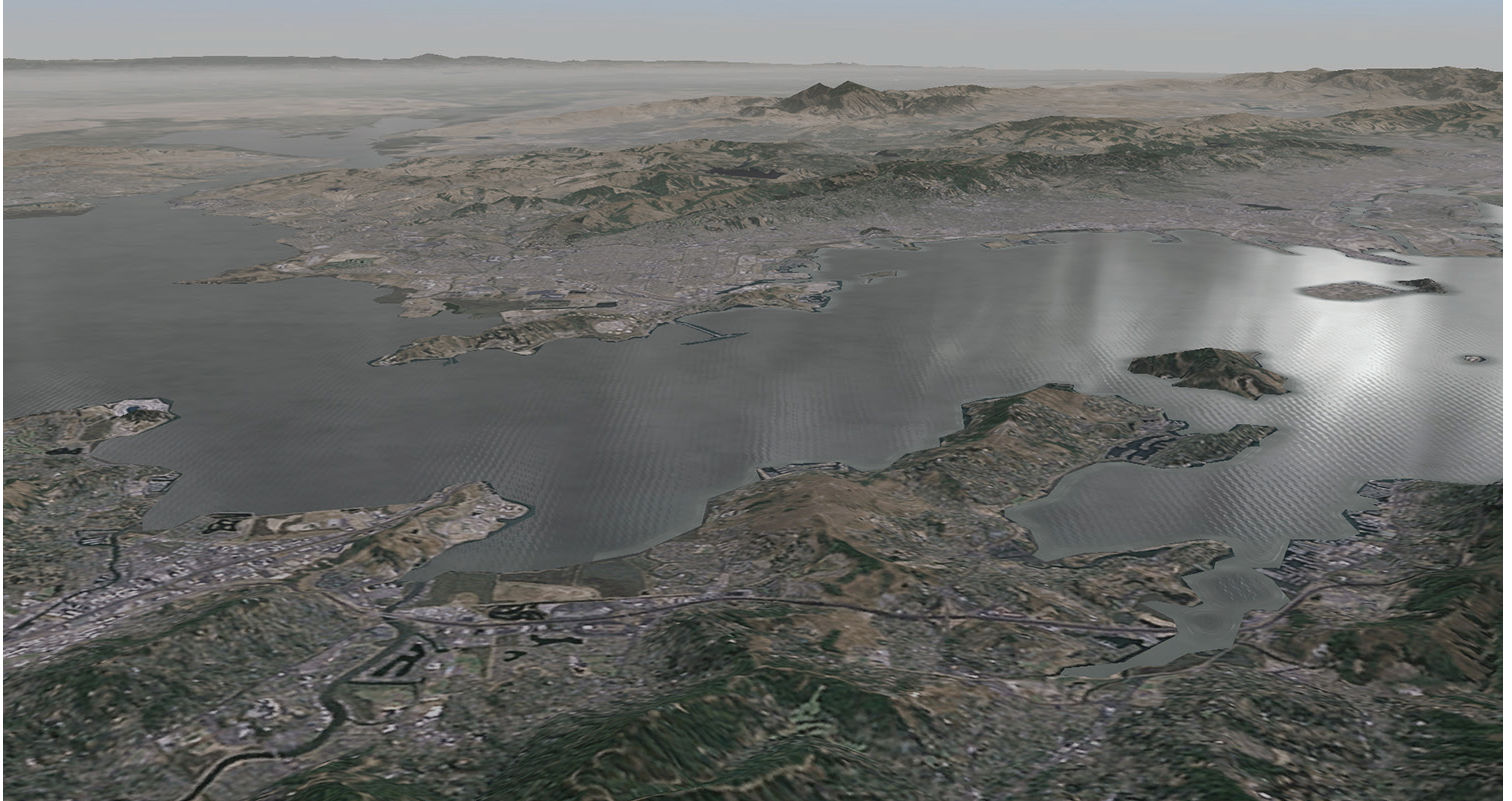


GeoScapeSE WWDB | GeoSpecific Worldwide Database



The world has arrived. A (COTS) commercial-off-the-shelf database, GeoScapeSE® WWDB offers the industry's first seamless worldwide coverage with continuous global flight utilizing drop in high-resolution insets.

The GeoScapeSE Difference

Quantum3D has extensive experience delivering geo-specific databases for the United States and various regions of the world. Increasingly, real-time training systems require continuous visual domain flight throughout multiple regions of the world. Quantum3D has taken its database expertise and applied it to a worldwide database solution. With the exception of North and South Polar Cap areas, GeoScapeSE WWDB delivers a complete representation of the entire world.

For additional details, Quantum3D's WWDB supports inseting of high resolution images for added local details. As the first COTS worldwide, geo-specific database on the market, GeoScapeSE WWDB is optimized for use on Quantum3D's Independence series of image generators.

With geo-specific imagery, vs other companies' geo-typical imagery, users receive the best quality global imagery available with color matching and balancing between adjacent data sets for consistent imagery worldwide. The resulting imagery delivers unparalleled global realism to meet the demands of all your training and simulation needs.

Key Features

Geo-Specific Imagery

While other platforms may deliver “geo-typical” imagery which approximates reality, Quantum3D’s GeoScapeSE WWDB delivers accurate “geo-specific” imagery at 15M or 10M.

High Resolution Insets

Choose from Quantum3D’s growing library of airfields and other high resolution areas of interest, or create a new inset based on custom requirements.

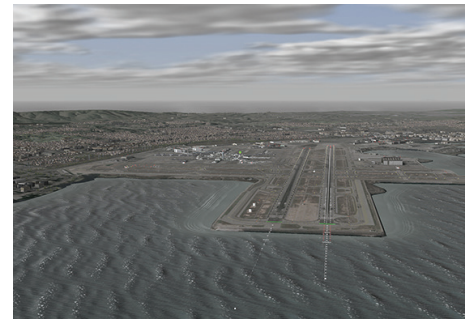
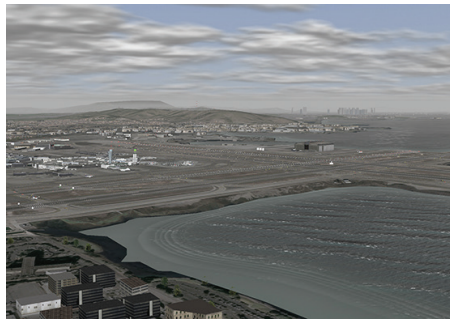
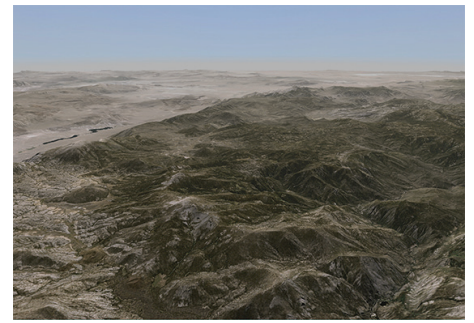
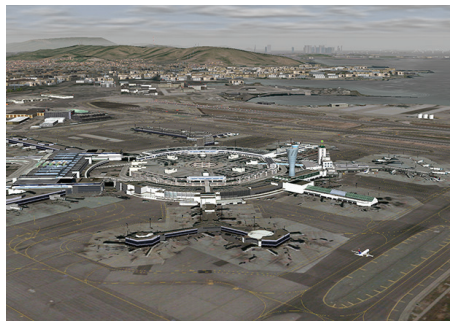
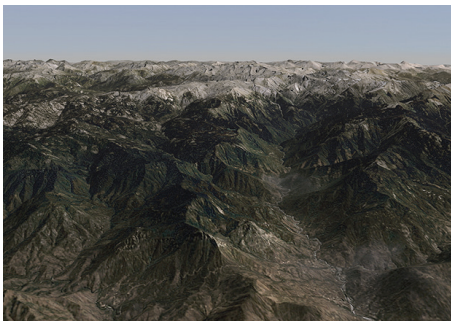
Environment Flexibility

Quantum3D’s GeoScapeSE WWDB can be used in a myriad of ways - for out-the-window viewing (OTW) and simulated night vision goggles (NVG), infrared (IR), electro-optical (EO) and radar real-time sensors. The database is optimized for fixed-wing and rotary-wing flight applications.

Optimized for Quantum3D IGs

GeoScapeSE is optimized for use with MANTIS® and for use on Quantum3D’s image generators, such as the Independence® IDX 80 and Independence® IDX 8000.

GeoScapeSE WWDB Sample Images



GeoScapeSE WWDB Off The Shelf High-Resolution Insets:

SouthWest US Insets:

Camp Pendleton
Edwards AFB
Indian Springs AF AUX
Mojave Airfield
Nellis AFB
Tonopah Test Range

East Coast US Insets:

Langley AFB
Patuxent River NAS
Oceana NAS

Other Insets:

Dobbins ARB
Dover AFB
Fort Worth Alliance
NAS Fort Worth JRB-Carswell
Randolph AFB
Whiting Field NAS
Santa Rosa NOLF
Seattle-Tacoma International
Tyndall AFB

Afghanistan Insets:

Kandahar International
Shindand Air Base